

Contents

The following Help Topics are available:

[Compatibility](#)

[Copyrights and Credits](#)

[The Interface Explained](#)

For Help on Help, Press F1

Copyrights and Credits

[Visual Man Lite](#)

[National Library of Medicine](#)

[User License](#)

Visual Man Lite

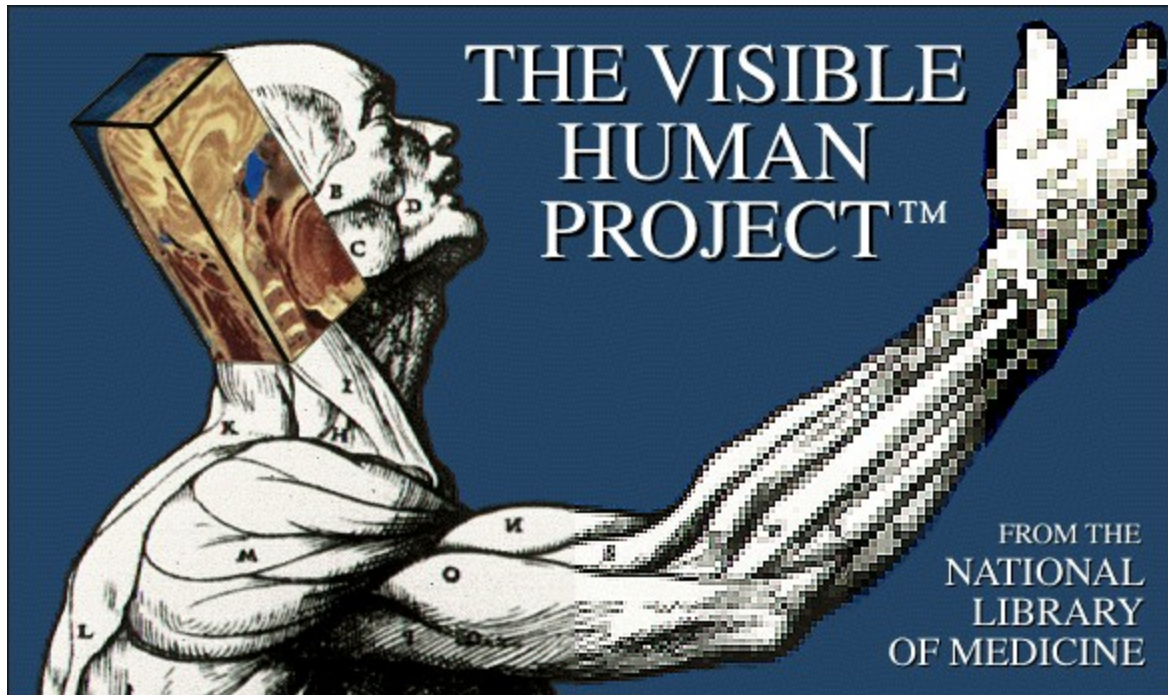
The **Visual Man Lite** graphical material and Help file.
Copyright 1996, [Digital Enterprises](#)

The **Visual Man Lite** interface program
Copyright 1996, Christopher J. Romeo

The **Visual Man Lite** CD-ROM
Copyright 1996, [Data Express, Inc.](#)

Visual Man™ is a registered trademark of Data Express, Inc.

National Library of Medicine



The images contained on this CD-ROM were derived from the National Library of Medicine's Visible Human Project™. An effort by the NLM to build a digital image library to advance the progress of medicine and public health.

User License

This CD-ROM disc and all data contained within, is copyrighted and is the sole property of the respective copyright holder. This license allows you to use the data on a single computer for noncommercial purposes only. This license is not transferable. The data shall not be sold, decompiled or reverse engineered in any way whatsoever. The data shall not be transmitted across a local area network. The data shall not be transmitted via modem or similar device. All trademarks, whether marked or not marked are the property of their respective owners.

The commercial use of this CD-ROM disc or its data is prohibited without first obtaining a site license from [Data Express, Inc.](#) Such use includes, but is not limited to, the following: use on an online service, use on a local area network, use that results in the copying of the data, use that involves the public display of the data, use that involves the conversion of the data, or any other use that is not specifically allowed.

Data Express, Inc.

Data Express, Inc.
908 S. Powerline Rd.
Pompano Beach, FL 33069

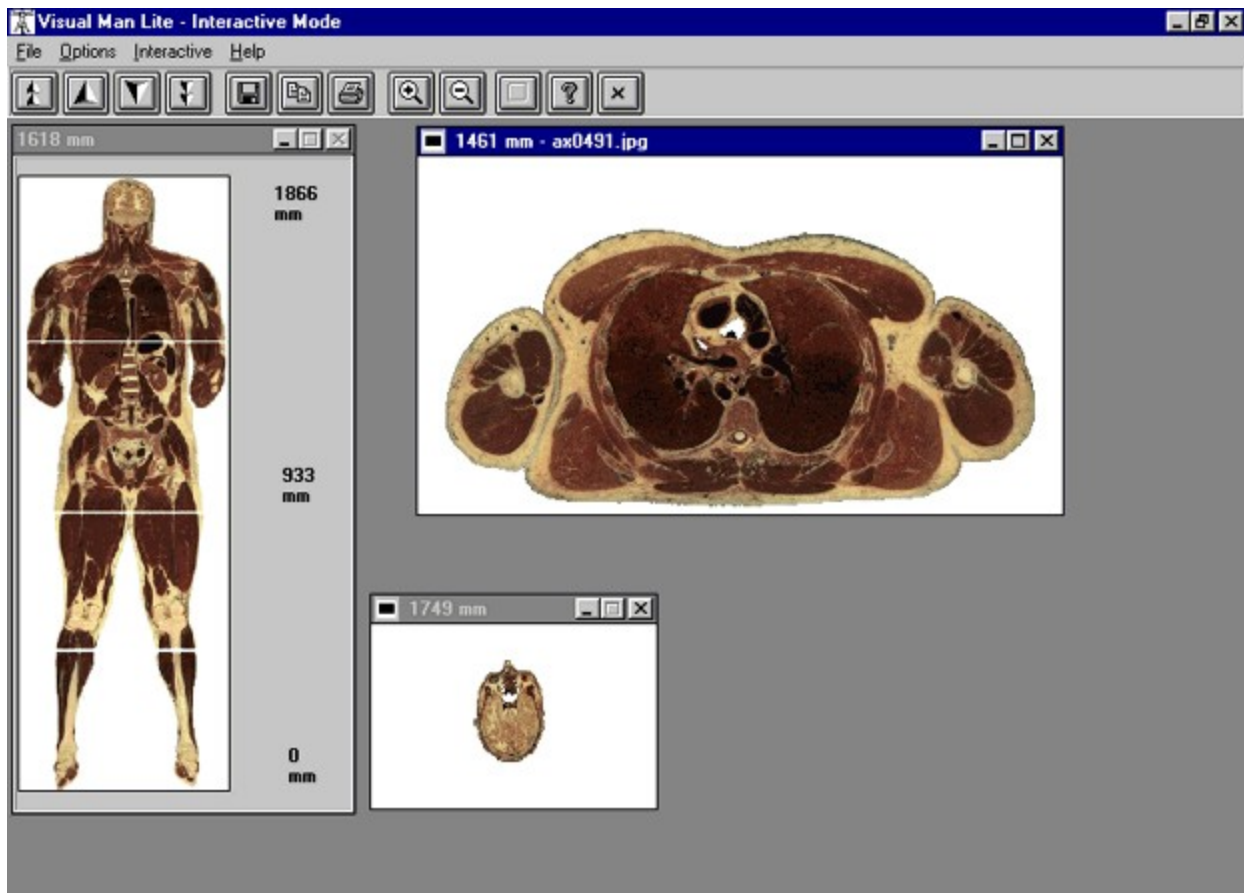
Tel: (954) 969-8100
Fax: (954) 969-8846
Email: Thelton@cris.com

Digital Enterprises

Digital Enterprises
410 Randolph St.
Owosso, MI 48867

Tel: (517) 725-8520
Fax: (517) 725-8889
Email: Elcee@tir.com

The Interface Explained



(Actual screen display may differ slightly - screen shot taken under Windows 95)

Up 3 mm

This button will advance the image number by one image, moving toward the head.

Down 3 mm

This button will decrement the image number by one image, moving toward the feet.

Up 9 mm

This button will advance the image number by three images, moving toward the head.

Down 9 mm

This button will decrement the image number by three images, moving toward the feet.

Save

Invokes the Save dialog box.
Allows you to save the currently loaded image as JPG, BMP, PCX, or TIF.

Also available from the File Menu.

Print

Invokes the Print dialog Box.
Allows you to print the currently loaded image.

Also available from the File Menu.

Clipboard

Copies the currently displayed image to the Windows Clipboard

Also available from the File Menu.

Help

Invokes the Windows Help system to view the Visual Man Lite Help file.

Zoom In

Increases the magnification of the loaded image.

An image must be loaded for this to function.

Zooming enables dragging of the displayed image. Clicking and dragging the the cursor will change the portion of the image which is displayed.

Zoom Out

Returns you one level backwards in image magnification.
If Zoom level is 1 then no action is taken.

Begin Slideshow

Starts a slideshow that you have defined.
Interface must be in Slideshow mode.

This option is enabled via
Option -> Mode -> Slideshow.

Exit

Exits the Visual Man Lite interface.

Also available from the File Menu.

Thumbnail Window

This image is displayed by Single clicking a point on The Man Selection tool. Double clicking on this thumbnail image will display the full-sized version.

The Man Selection tool.

By single clicking on this image, you will see a thumbnail of the corresponding Axial image from the Visual Man lite database.

Double Clicking will bypass the thumbnail and directly display the full sized image.

Full Sized Image

This window is opened when you double click on The Man Selection tool, or when you single click on the Thumbnail window.

When the image is zoomed, you may click on a location to drag and drop, in order to view areas which do not fit into the display. Right clicking on this form when zoom mode is engaged will return you to the 1X view.

This window can be made full screen by using the form maximize button on this window.

Maximize Window

Clicking here will maximize the Full sized image window to allow a clearer view of the image.

Interactive

Interactive/Slideshow mode menu. Optional access to controls available on the main selection tool.

Becomes Slideshow mode commands when you choose Options -> Mode -> Slideshow

File Menu

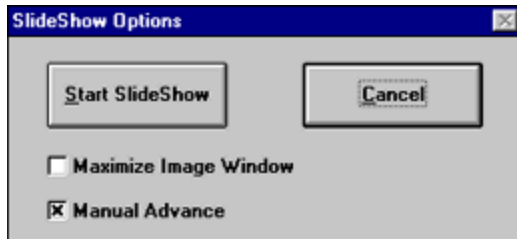
Optional access to file saving, printing and exit functions.

Options

Access to:

- Tips Enable/Disable
- Interface mode toggle
- Info Boxes Enable/Disable

Slideshow Dialog Box



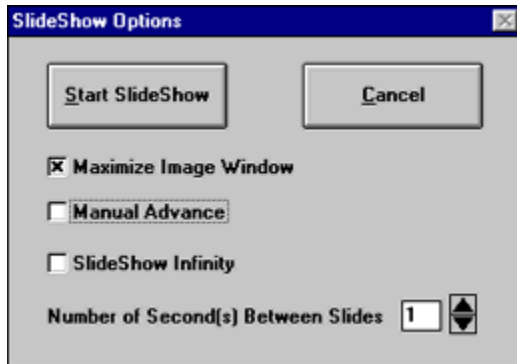
SlideShow Options

Start SlideShow Cancel

Maximize Image Window

Manual Advance

- Form with Manual Advance option enabled.



SlideShow Options

Start SlideShow Cancel

Maximize Image Window

Manual Advance

SlideShow Infinity

Number of Second(s) Between Slides 1

- Form with Manual Advance option disabled

Cancel

This option cancels the current operation.

Manual advance

Causes the slideshow system to wait for you to manually cycle through the images.

Slideshow maximize

Instructs the interface to maximize the display window of the images which are chosen for the slideshow.

Delay Time

Allows you to specify the number of seconds between images displayed when in Slideshow mode.

Ruler

This section is here to help gauge where a mouse click will be located on the body.

Compatibility

Visual Man Lite was exclusively developed and tested under Windows 95. The interface is a 16 bit application, and will run correctly on any host system with 8 Megabytes of RAM that is running Windows 3.1 or Windows 95.

For best results, please configure your video display to use 16 or 24 bit color.

